



Medizinische Universität Graz

Gesichts- und Kieferfehlbildungen

Perinatologische ARGE für Steiermark
Wissenschaftliche Sitzung am 30.06.2015

Prof. Dr. Philipp Klaritsch
Universitätsklinik für Frauenheilkunde und Geburtshilfe
Medizinische Universität Graz

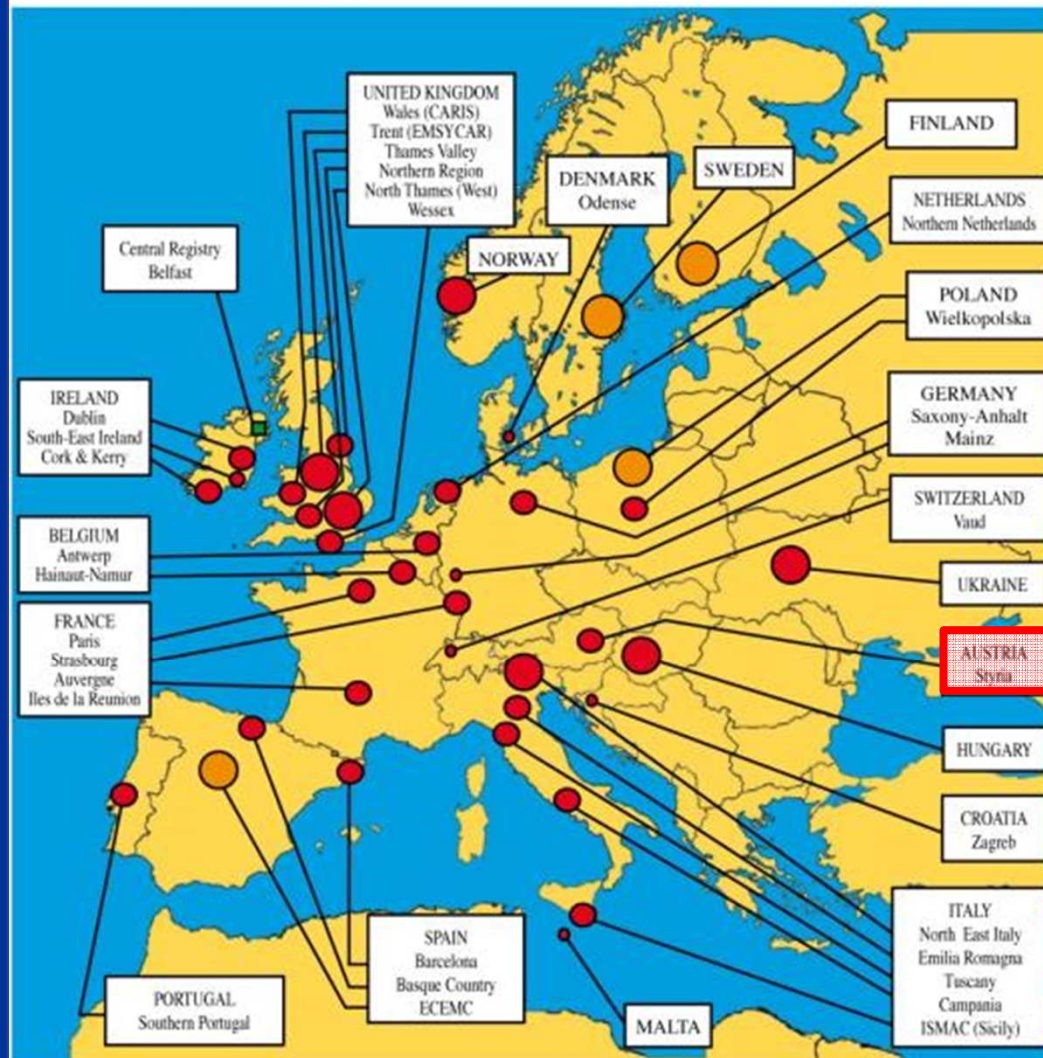
LKG-Spalten

- ▶▶ 1:500 – 1:1000 Lebendgeburten
- ▶▶ 20%-50% assoziiert mit anderen Anomalien
- ▶▶ Teil von >350 Syndromen (OMIM 2015)

Eurocat

European Surveillance of Congenital Anomalies

Map of Full & Associate Registries



● Full Member

● Associate Member

Size of circle

● < 10,000 births per year

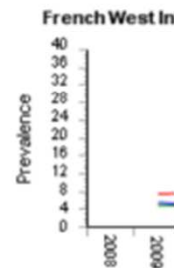
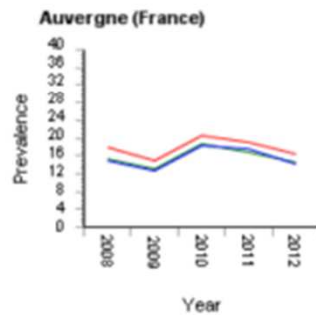
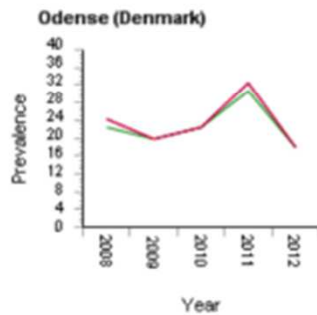
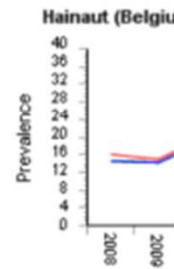
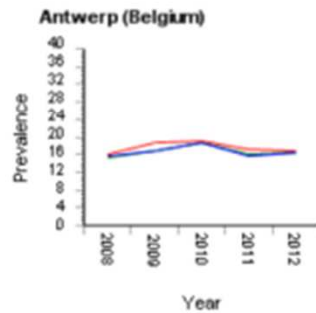
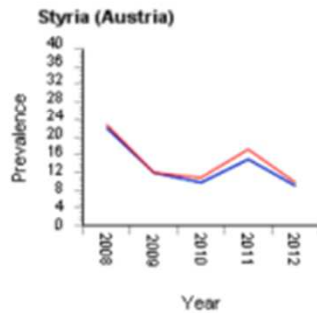
● 10,000 - 40,000 births per year

● > 40,000 births per year

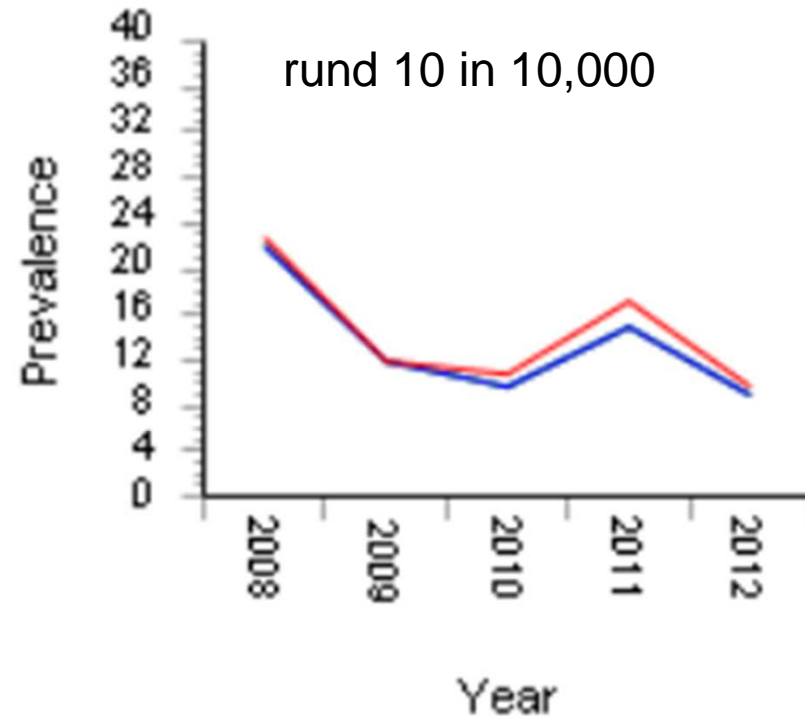
Orofaziale Spalten

EUROCAT Prevalence Data Tables

F1 - Oro-facial clefts (per 10,000 births) for the following registries: All Registries, from 2008 - 2012



Styria (Austria)

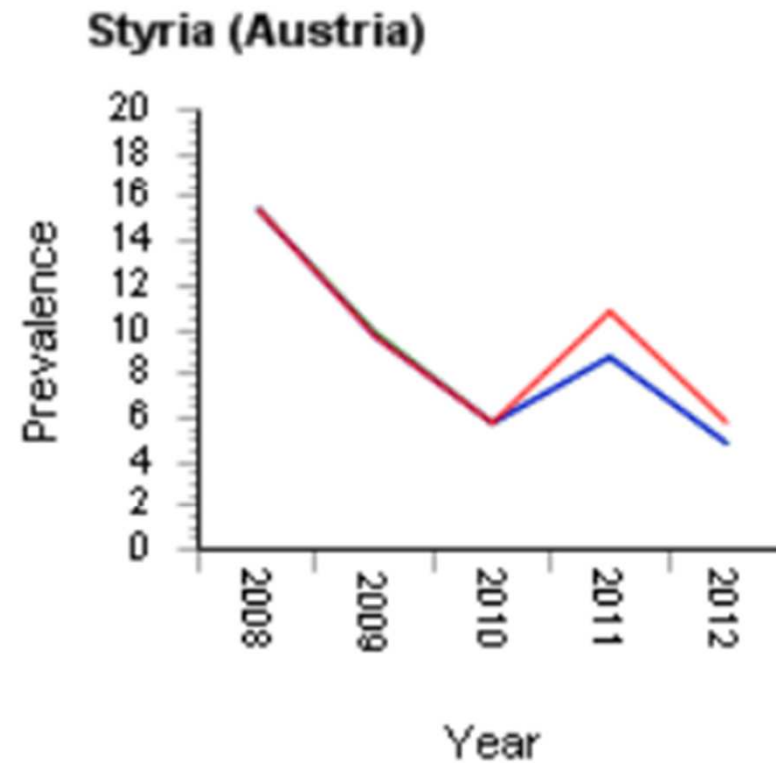
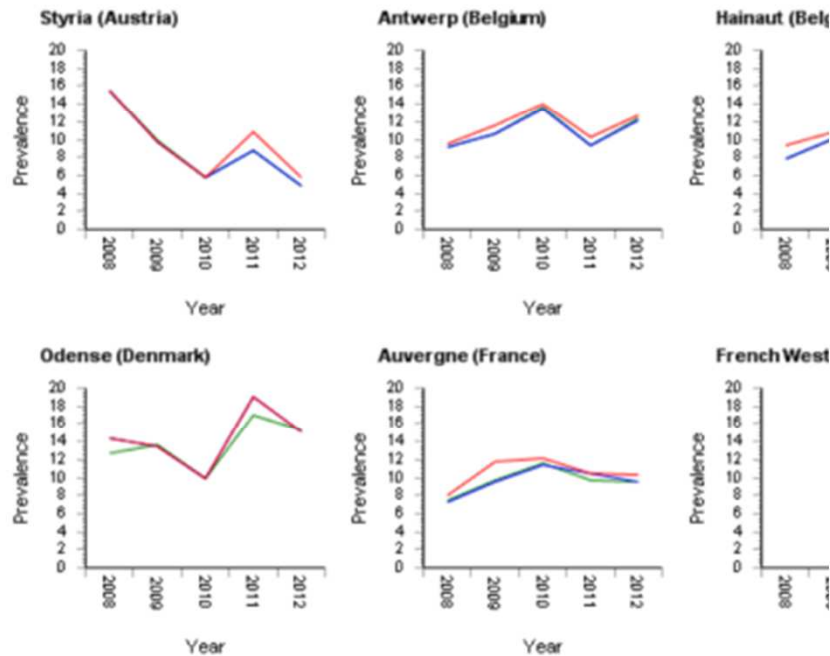


LKG-Spalten

EUROCAT Prevalence Data Table

F1 - Cleft lip with or without palate (per 10,000 births) for the following registries: All Registries, from 2008 - 2012

LEGEND
 Total Prevalence
 Birth Prevalence
 Live Birth Prevalence

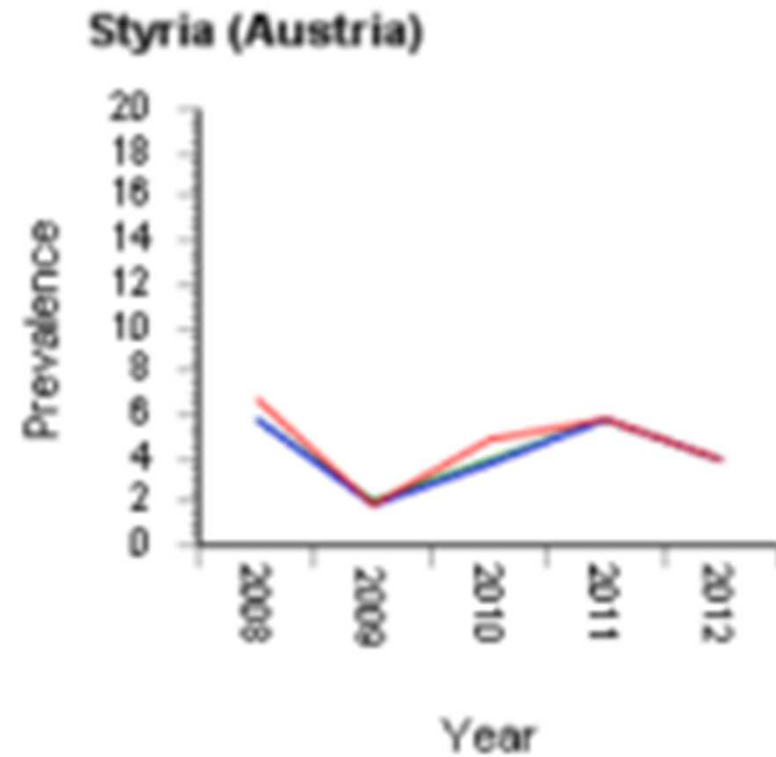
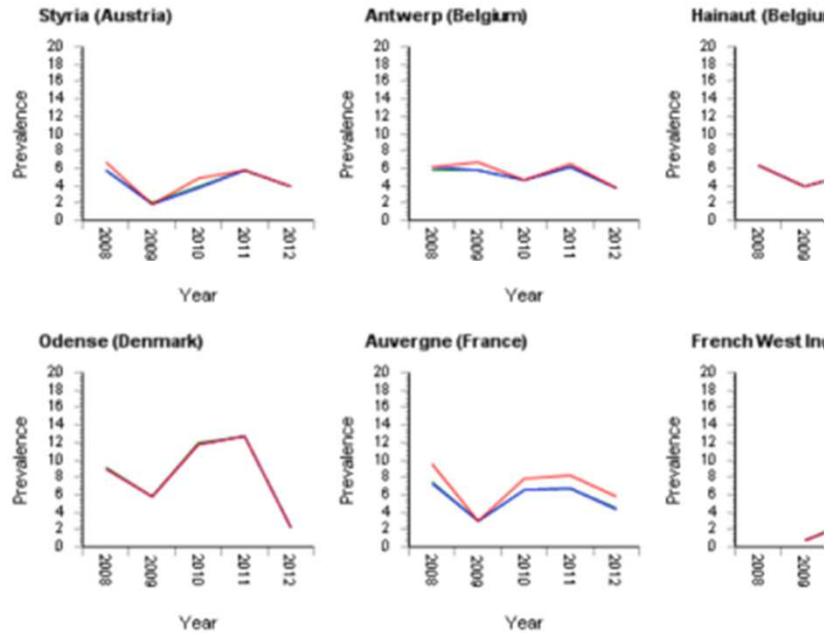


Gaumenspalten

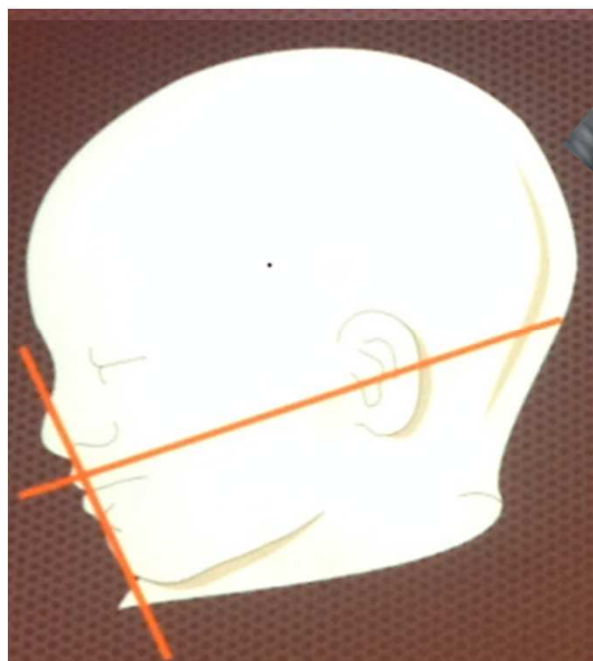
EUROCAT Prevalence Data Tables

F1 - Cleft palate (per 10,000 births) for the following registries: All Registries, from 2008 - 2012

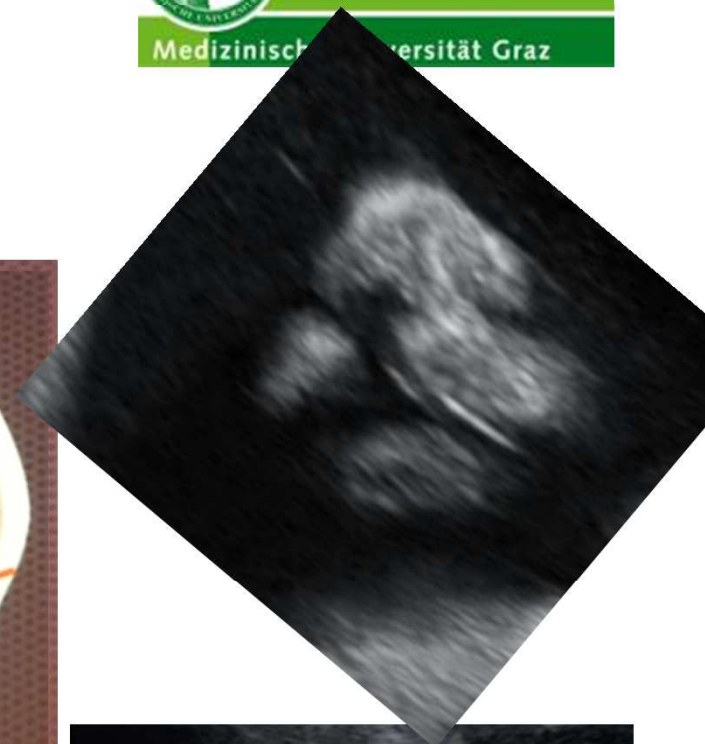
LEGEND
 Total Prevalence
 Birth Prevalence
 Live Birth Prevalence



sonographische Diagnostik

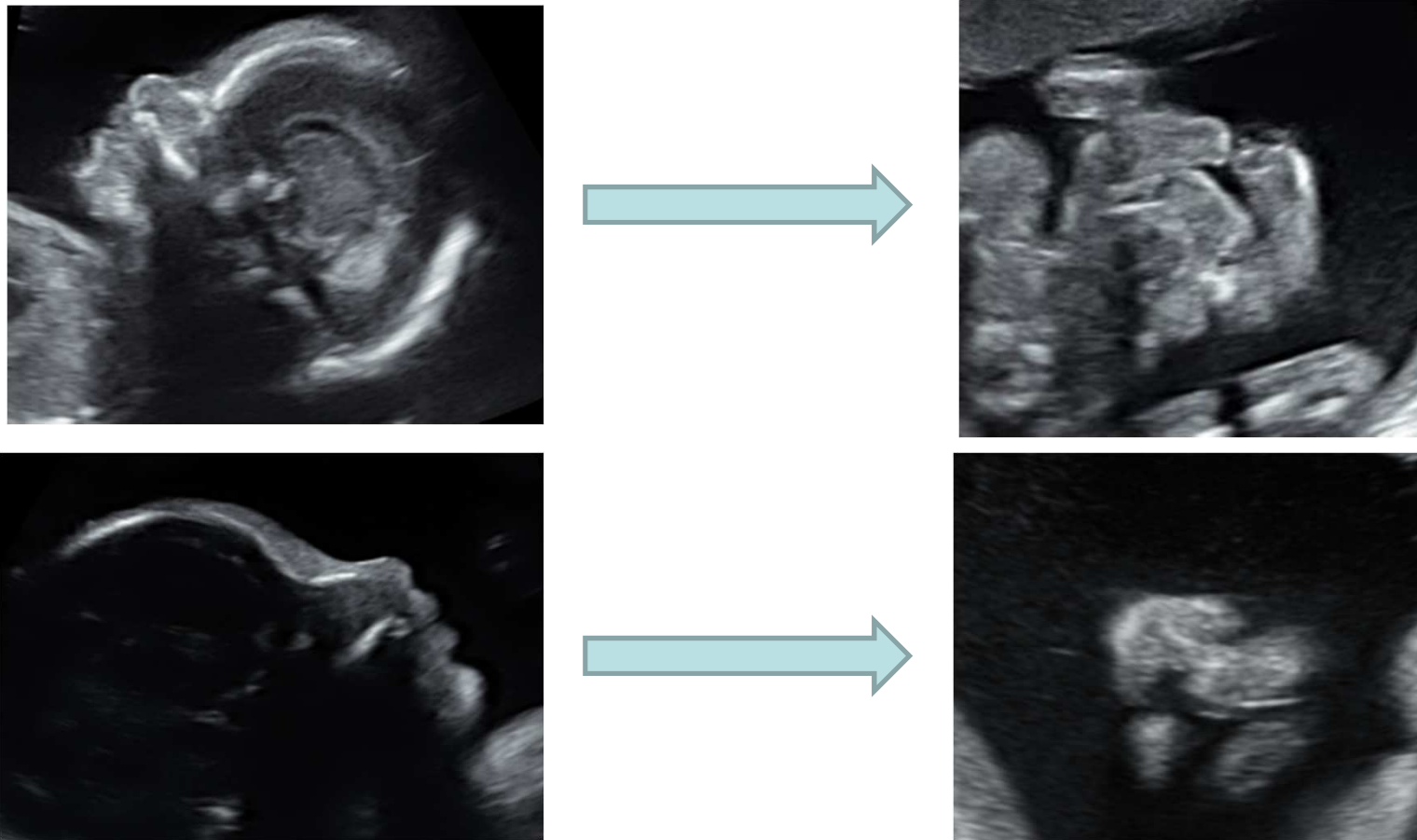


- ▶▶ Koronale Ebene
- ▶▶ Axiale Ebene



Modifiziert nach R. Chaoui FMF 2015

Profil ungeeignet für Screening auf LKG-Spalten!



3D hilfreich



Diagnostik isolierter Gaumenspalten schwierig!



The 'equals sign': a novel marker in the diagnosis of fetal isolated cleft palate



Ultrasound in Obstetrics and Gynecology

Volume 36, Issue 4, pages 439-444, 2 JUN 2010 DOI: 10.1002/uog.7704

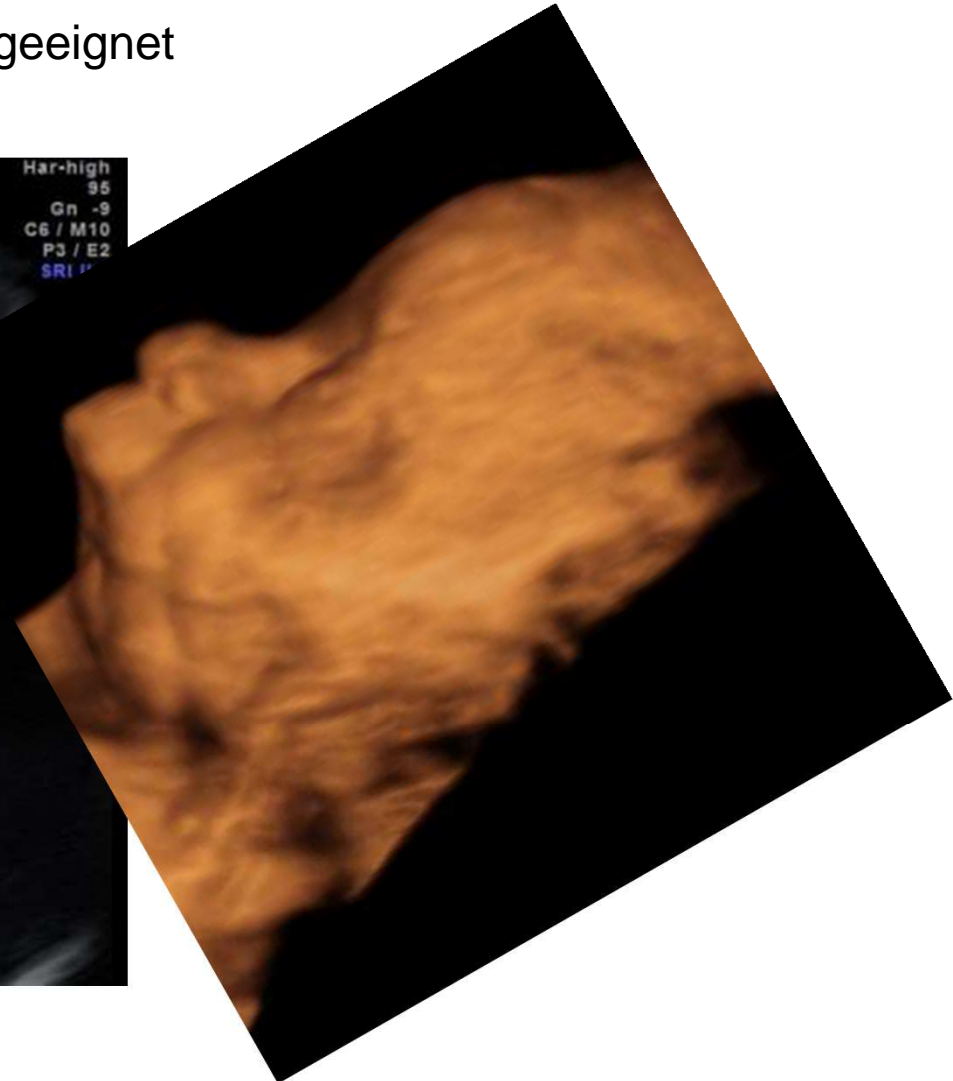
<http://onlinelibrary.wiley.com/doi/10.1002/uog.7704/full#fig1>

Pierre Robin Sequenz

- ▶▶ Kongenitale Malformation
 - Mikrognathie, Glossoptosis, Luftwegsobstruktion
 - Gaumenspalte in bis zu 90% der Fälle
- ▶▶ 1:2000 – 1:30,000 Lebendgeburten
- ▶▶ Mortalität bis zu 30%!

Pierre Robin Sequenz

Profil für Screening auf Mikrognathie gut geeignet



Pierre-Robin - Mikrognathie

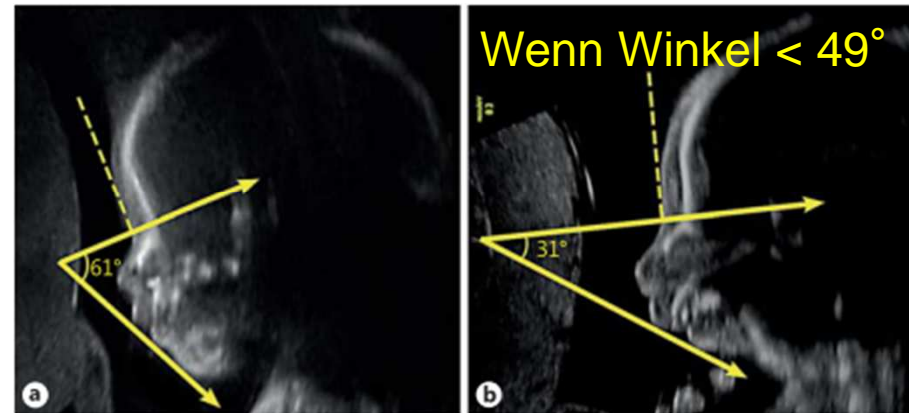
Prenatal Identification of Pierre Robin Sequence: A Review of the Literature and Look towards the Future

Matthew G. Kaufman^a Christopher I. Cassady^b Charles H. Hyman^a
Wesley Lee^c Mehernoor F. Watcha^d Helena K. Hippard^d Olutoyin A. Olutoye^d
David Y. Khechoyan^a Laura A. Monson^a Edward P. Buchanan^a

^aDivision of Plastic Surgery, Michael E. DeBakey Department of Surgery, and Departments of ^bRadiology, ^cObstetrics and Gynecology and ^dPediatric Anesthesiology, Baylor College of Medicine, Houston, Tex., USA

IFA= Inferior
mandibular angle

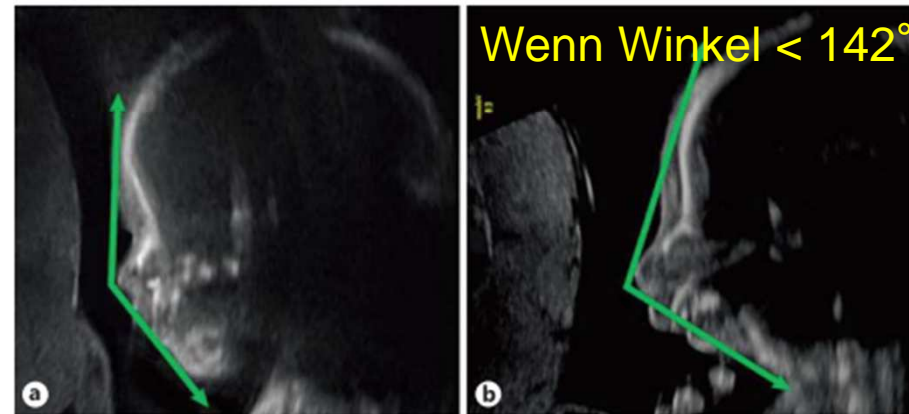
Fig. 2. Two-dimensional ultrasound images of a normal fetal facial profile (a) and a patient with micrognathia (b). The lines to measure the IFA have been drawn to assist with rapid evaluation of micrognathia.



Color version available online

FNM= fronto-naso-mental
angle

Fig. 3. Two-dimensional ultrasound images of a normal fetal facial profile (a) and a patient with micrognathia (b). The lines to measure the FNM angle have been drawn.



Color version available online

IFA und FNM





Medizinische Universität Graz

Danke für Ihre Aufmerksamkeit !

assoc. Prof. PD Dr. Philipp Klaritsch
Universitätsklinik für Frauenheilkunde und Geburtshilfe
Auenbruggerplatz 18, A-8036 Graz.
Tel. 0316 385 12888
Fax 0316 385 13199

philipp.klaritsch@medunigraz.at